



Bell Yard Mews, SE1 London Bridge

£1,200.00 pw

2  2 

- Newly Refurbished
- Penthouse Apartment
- Floor To Ceiling Windows
- INCLUSIVE OF ALL UTILITIES
- Two Double Bedrooms
- Stunning Views
- Excellent Location
- Two Bathrooms
- Wraparound Terrace
- Good Transport Links

A recently refurbished 2 bed, 2 bath penthouse apartment set within a gated modern development in the heart of London Bridge, SE1. The property is located off sought after Bermondsey Street and spans over 1000 Sq ft including a stunning wrap around terrace boasting panoramic views of the London skyline, a spacious bright and airy open plan kitchen lounge with modern fixtures and fittings, two large double bedrooms and two modern bathroom suites (one En-suite).

Further benefits include floor to ceiling windows, private lift access, double glazing throughout, video entry-phone system and is inclusive of all utilities. Bermondsey Street offers a fantastic range of independent restaurants, shops, bars and art galleries. It has a fantastic, friendly community and small pockets of green space to enjoy close by. Within close reach of London Bridge station and the amenities of the South Bank, it's ideal for those working in the City or on an extended break.

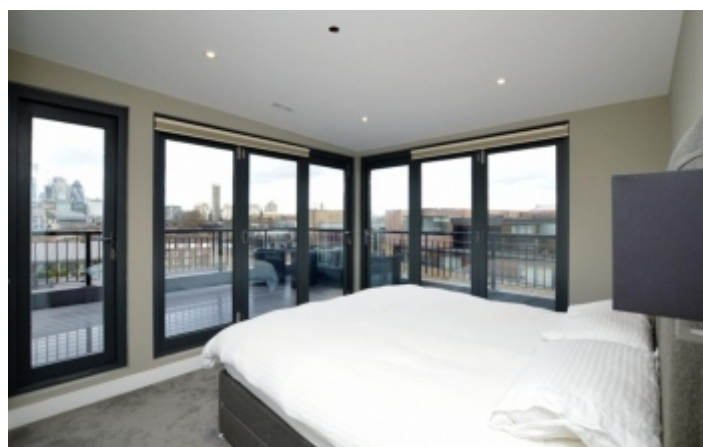


To arrange a viewing for this property please call us on: **020 7261 1103**

A: 54 Southwark Bridge Road, London, SE1 0AR **T:** 020 7261 1103 **F:** 020 7401 2007 **W:**

www.nelsonssales.com

Property images:



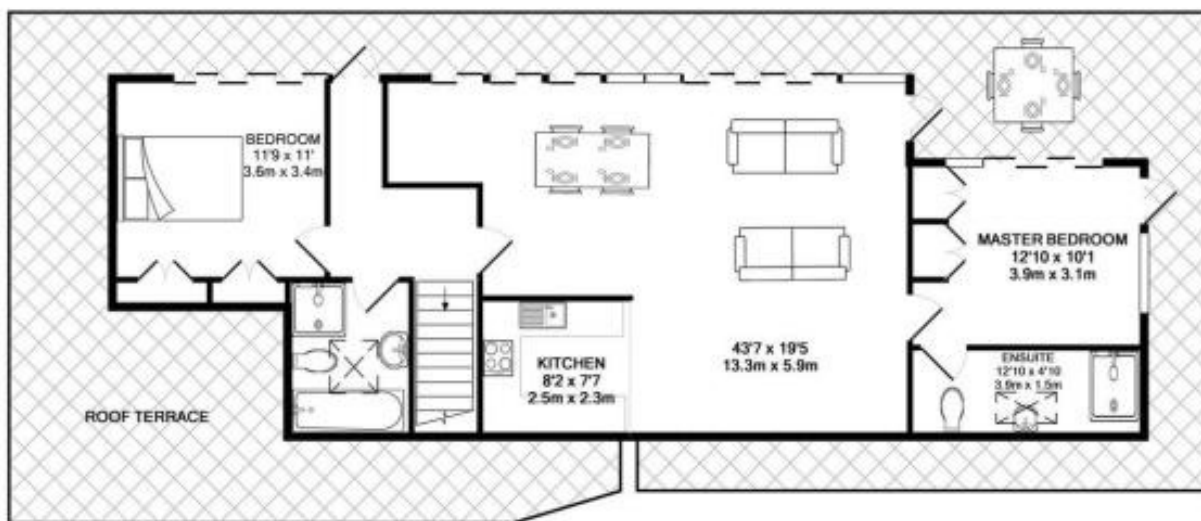
To arrange a viewing for this property please call us on: **020 7261 1103**

A: 54 Southwark Bridge Road, London, SE1 0AR **T:** 020 7261 1103 **F:** 020 7401 2007 **W:**
www.nelsonssales.com

Floor Plans



5TH FLOOR
APPROX. FLOOR
AREA 34 SQ.FT.
(3.2 SQ.M.)



6TH FLOOR
APPROX. FLOOR
AREA 976 SQ.FT.
(90.6 SQ.M.)

TOTAL APPROX. FLOOR AREA 1010 SQ.FT. (93.8 SQ.M.)



To arrange a viewing for this property please call us on: **020 7261 1103**

A: 54 Southwark Bridge Road, London, SE1 0AR **T:** 020 7261 1103 **F:** 020 7401 2007 **W:**
www.nelsonssales.com

Location



Important Notice

These details have been prepared and issued in good faith and do not constitute representations of fact or form of any offer or contract. Please note that we have not carried out a structural survey of the property, nor have we tested any of the services or appliances. All measurements are intended to be approximate only. All photographs show parts of the property as they were at the time when taken.

Any reference to alterations or particular use of the property wherever stated, is not a statement that planning, building regulations or otherwise relevant consent has been obtained.

Floor plan - All measurements, walls, doors, windows, fittings and appliances, their sizes and locations are shown conventionally and approximate only and cannot be regarded as being a representation either by the seller or his Agent.



To arrange a viewing for this property please call us on: **020 7261 1103**

A: 54 Southwark Bridge Road, London, SE1 0AR **T:** 020 7261 1103 **F:** 020 7401 2007 **W:**

www.nelsonssales.com