



## Kildare Terrace, W2 Notting Hill Gate

£450.00 pw

2  1 

- Two Bedrooms
- Modern Fitted Kitchen with Breakfast Bar
- Vaulted Ceilings
- Excellent Location
- Duplex
- Wood Floors
- Double Glazing
- Top Floor Flat
- Spiral Staircase
- Gas Central Heating

Located on this leafy and peaceful Notting Hill street, this superb, top floor, two bedroom apartment boasts an open-plan kitchen reception, a spiral staircase that leads to two bedrooms with fitted wardrobes and a three piece bathroom suite.

Further benefits include wood floors, gas central heating, double glazing and entryphone system. Located moments from the many boutiques, shops, restaurants and bars of Westbourne Grove, within a short walk to Portobello Road along with Bayswater, Notting Hill and Ladbrooke Grove all within close proximity.

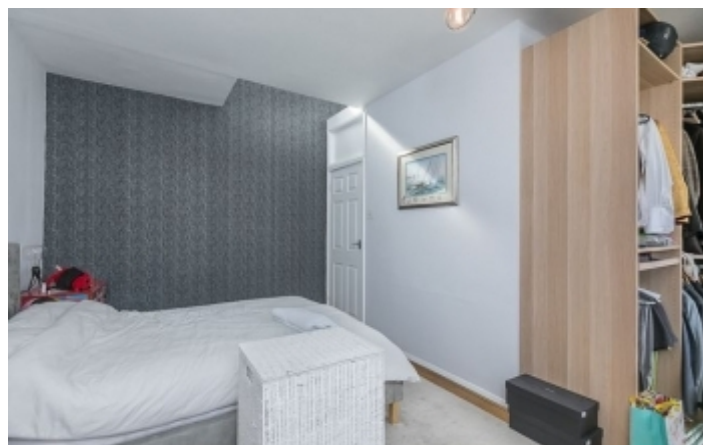


To arrange a viewing for this property please call us on: **020 7261 1103**

**A:** 54 Southwark Bridge Road, London, SE1 0AR **T:** 020 7261 1103 **F:** 020 7401 2007 **W:**

[www.nelsonssales.com](http://www.nelsonssales.com)

Property images:



To arrange a viewing for this property please call us on: **020 7261 1103**

**A:** 54 Southwark Bridge Road, London, SE1 0AR **T:** 020 7261 1103 **F:** 020 7401 2007 **W:**  
[www.nelsonssales.com](http://www.nelsonssales.com)

---

## Location



---

## Important Notice

These details have been prepared and issued in good faith and do not constitute representations of fact or form of any offer or contract. Please note that we have not carried out a structural survey of the property, nor have we tested any of the services or appliances. All measurements are intended to be approximate only. All photographs show parts of the property as they were at the time when taken.

Any reference to alterations or particular use of the property wherever stated, is not a statement that planning, building regulations or otherwise relevant consent has been obtained.

Floor plan - All measurements, walls, doors, windows, fittings and appliances, their sizes and locations are shown conventionally and approximate only and cannot be regarded as being a representation either by the seller or his Agent.



To arrange a viewing for this property please call us on: **020 7261 1103**

**A:** 54 Southwark Bridge Road, London, SE1 0AR **T:** 020 7261 1103 **F:** 020 7401 2007 **W:**

[www.nelsonssales.com](http://www.nelsonssales.com)