



## Walworth Road, SE17 Elephant & Castle

£500.00 pw

3  1 

- Three Double Bedrooms
- Three Piece Bathroom Suite
- Double Glazing
- Great Location
- Split Level
- Separate W/C
- Over 1100sqft
- Open Plan Kitchen Lounge
- Wood Floors
- Excellent Transport Links

Situated on the vibrant Walworth Road is this three double bedroom apartment within easy reach of Elephant & Castle and Kennington tube stations offering easy access into Central London. The property comprises of an open plan kitchen/living area, three piece bathroom suite and separate WC. Upstairs there are three well proportioned double bedrooms. Further benefits include wood floors, double glazing and is offered furnished.

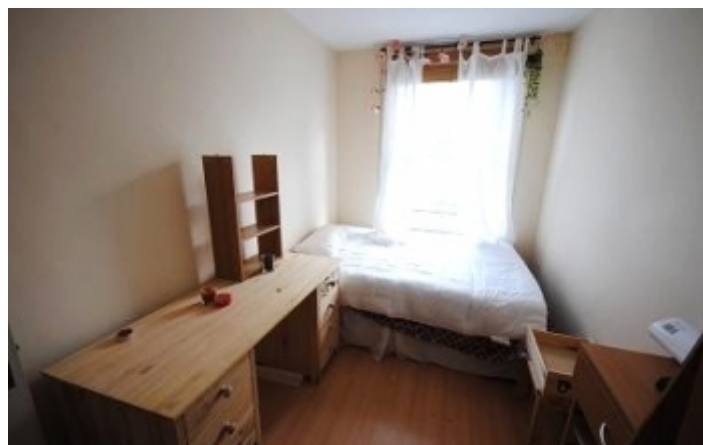


To arrange a viewing for this property please call us on: **020 7261 1103**

**A:** 54 Southwark Bridge Road, London, SE1 0AR **T:** 020 7261 1103 **F:** 020 7401 2007 **W:**

[www.nelsonssales.com](http://www.nelsonssales.com)

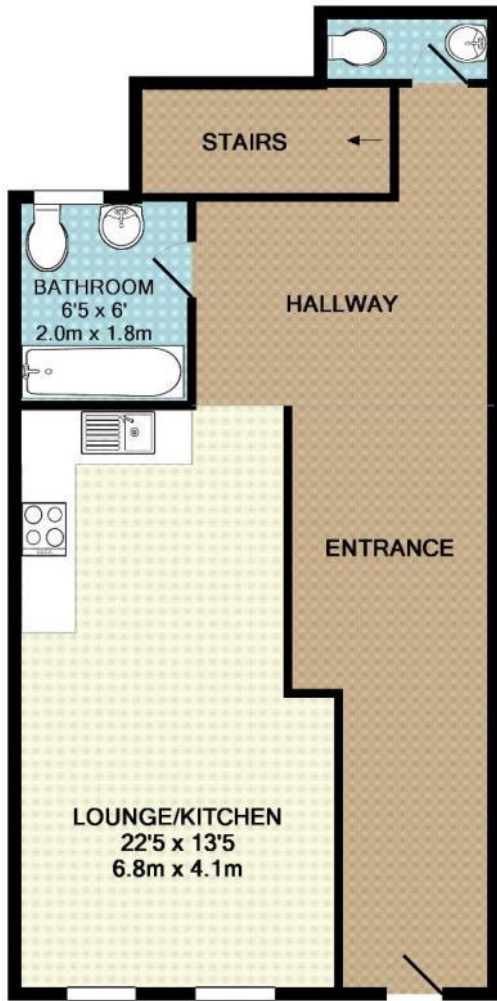
**Property images:**



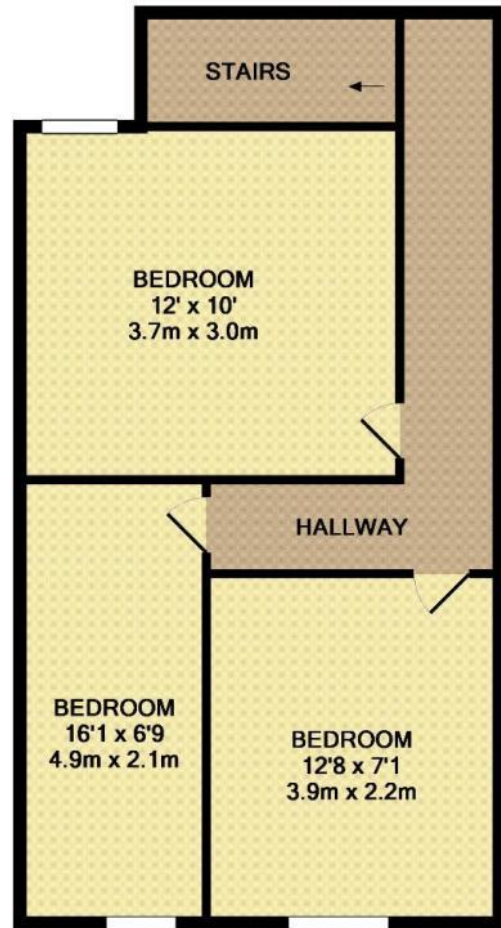
To arrange a viewing for this property please call us on: **020 7261 1103**

**A:** 54 Southwark Bridge Road, London, SE1 0AR **T:** 020 7261 1103 **F:** 020 7401 2007 **W:**  
[www.nelsonssales.com](http://www.nelsonssales.com)

## Floor Plans



GROUND FLOOR  
APPROX. FLOOR  
AREA 572 SQ.FT.  
(53.1 SQ.M.)



1ST FLOOR  
APPROX. FLOOR  
AREA 556 SQ.FT.  
(51.6 SQ.M.)

TOTAL APPROX. FLOOR AREA 1128 SQ.FT. (104.8 SQ.M.)



To arrange a viewing for this property please call us on: **020 7261 1103**

**A:** 54 Southwark Bridge Road, London, SE1 0AR **T:** 020 7261 1103 **F:** 020 7401 2007 **W:**

[www.nelsonssales.com](http://www.nelsonssales.com)

---

## Location



---

## Important Notice

These details have been prepared and issued in good faith and do not constitute representations of fact or form of any offer or contract. Please note that we have not carried out a structural survey of the property, nor have we tested any of the services or appliances. All measurements are intended to be approximate only. All photographs show parts of the property as they were at the time when taken.

Any reference to alterations or particular use of the property wherever stated, is not a statement that planning, building regulations or otherwise relevant consent has been obtained.

Floor plan - All measurements, walls, doors, windows, fittings and appliances, their sizes and locations are shown conventionally and approximate only and cannot be regarded as being a representation either by the seller or his Agent.



To arrange a viewing for this property please call us on: **020 7261 1103**

**A:** 54 Southwark Bridge Road, London, SE1 0AR **T:** 020 7261 1103 **F:** 020 7401 2007 **W:**

[www.nelsonssales.com](http://www.nelsonssales.com)