



County Street, SE1 London Bridge

£620.00 pw

4  1 

- Three / Four Double Bedrooms
- Reception Room
- Separate Fully Fitted Kitchen
- Tilled Floors
- 1st Floor
- Private Balcony
- Excellent Transport Links
- Great Location
- Separate W/C
- Modern Bathroom Suite

A large four double bedroom flat located in a residential location, ideally placed for easy access to Borough High Street and London Bridge. The property is situated on the first floor and comprises of a separate fitted kitchen, four double bedrooms and a three piece bathroom suite. County Street is within easy reach of the local restaurants, fashionable bars and boutique shops of Bermondsey Street, Butlers Wharf, Shad Thames and Borough Market and the tourist attractions and coffee houses of Tooley Street.

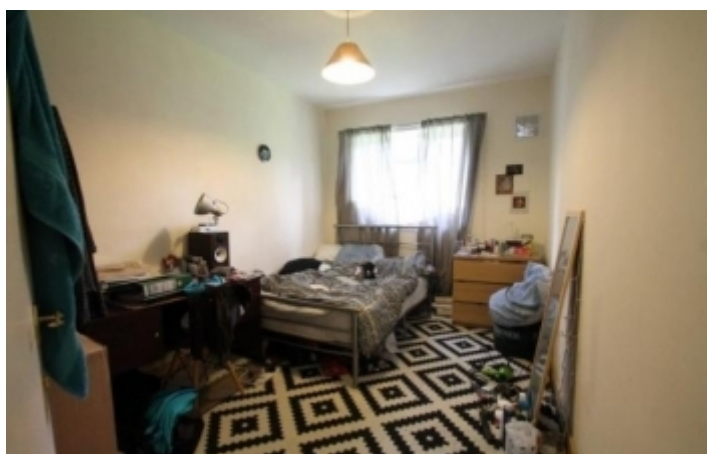


To arrange a viewing for this property please call us on: **020 7261 1103**

A: 54 Southwark Bridge Road, London, SE1 0AR **T:** 020 7261 1103 **F:** 020 7401 2007 **W:**

www.nelsonssales.com

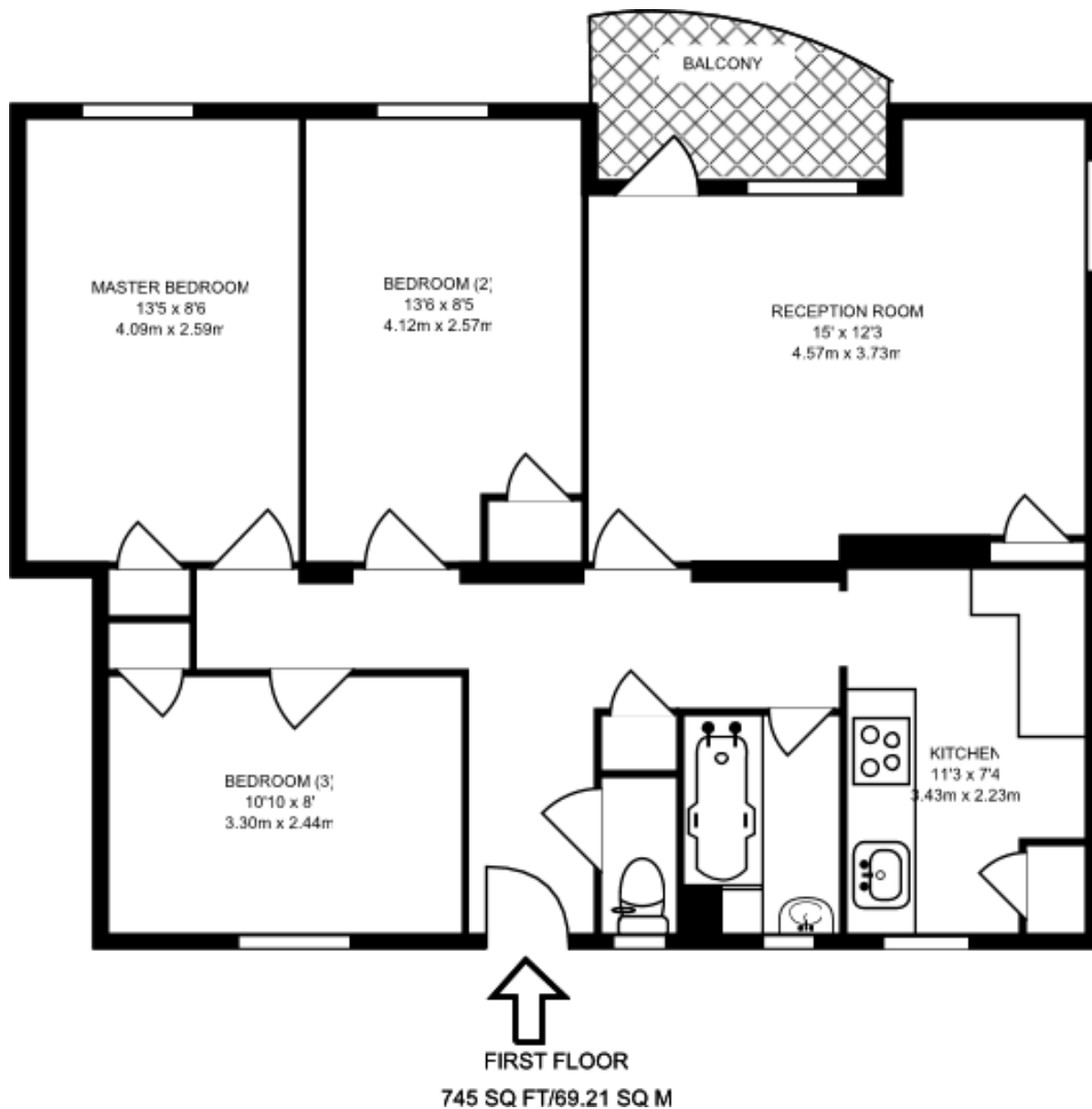
Property images:



To arrange a viewing for this property please call us on: **020 7261 1103**

A: 54 Southwark Bridge Road, London, SE1 0AR **T:** 020 7261 1103 **F:** 020 7401 2007 **W:**
www.nelsonssales.com

Floor Plans



To arrange a viewing for this property please call us on: **020 7261 1103**

A: 54 Southwark Bridge Road, London, SE1 0AR **T:** 020 7261 1103 **F:** 020 7401 2007 **W:**
www.nelsonssales.com

Location



Important Notice

These details have been prepared and issued in good faith and do not constitute representations of fact or form of any offer or contract. Please note that we have not carried out a structural survey of the property, nor have we tested any of the services or appliances. All measurements are intended to be approximate only. All photographs show parts of the property as they were at the time when taken.

Any reference to alterations or particular use of the property wherever stated, is not a statement that planning, building regulations or otherwise relevant consent has been obtained.

Floor plan - All measurements, walls, doors, windows, fittings and appliances, their sizes and locations are shown conventionally and approximate only and cannot be regarded as being a representation either by the seller or his Agent.



To arrange a viewing for this property please call us on: **020 7261 1103**

A: 54 Southwark Bridge Road, London, SE1 0AR **T:** 020 7261 1103 **F:** 020 7401 2007 **W:**

www.nelsonssales.com