



Narrow Street, E14 Lime House

£900.00 pw

3  3 

- Penthouse Apartment
- Large Open Plan Living Area
- Lobby Area with a Library
- Three Bathrooms
- 1500sqft
- 24hr Concierge
- River Views
- Stunning Private Terrace
- Underground Parking
- Modern Development

An amazing three bedroom penthouse apartment spanning over 1500 sqft located in the heart of Limehouse. The apartment boasts three double bedrooms, three bathrooms (two en suite), a large open plan kitchen lounge leading out to a spectacular spacious terrace overlooking River Thames and Canary Wharf. The Mosaic is conveniently located on Narrow Street with all its bars and restaurants and is very close to Limehouse DLR. Further benefits include a wood floors, 24hr concierge service and secure underground parking.

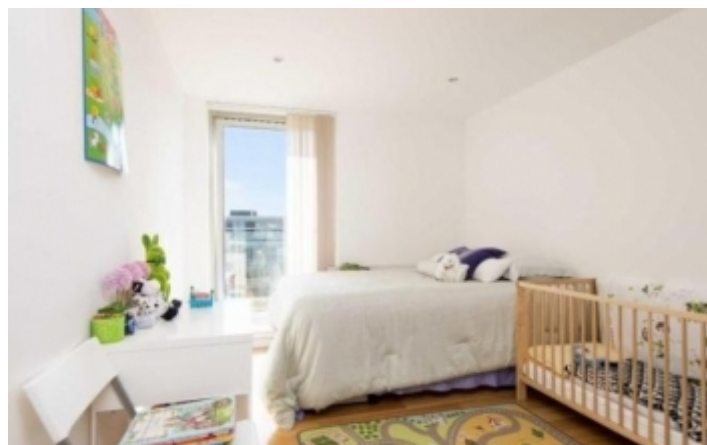


To arrange a viewing for this property please call us on: **020 7261 1103**

A: 54 Southwark Bridge Road, London, SE1 0AR **T:** 020 7261 1103 **F:** 020 7401 2007 **W:**

www.nelsonssales.com

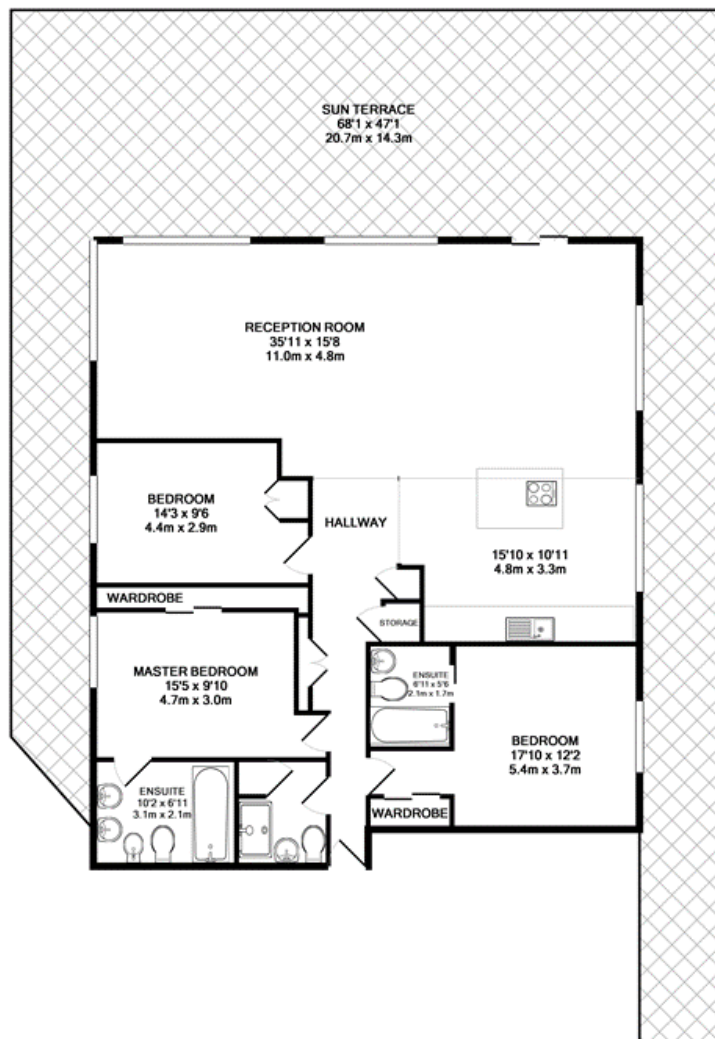
Property images:



To arrange a viewing for this property please call us on: **020 7261 1103**

A: 54 Southwark Bridge Road, London, SE1 0AR **T:** 020 7261 1103 **F:** 020 7401 2007 **W:**
www.nelsonssales.com

Floor Plans



TOTAL APPROX. FLOOR AREA 1437 SQ.FT. (133.5 SQ.M.)

Whilst every attempt has been made to ensure the accuracy of the floor plan contained here, measurements of doors, windows, rooms and any other items are approximate and no responsibility is taken for any error, omission, or mis-statement. This plan is for illustrative purposes only and should be used as such by any prospective purchaser. The services, systems and appliances shown have not been tested and no guarantee as to their operability or efficiency can be given.
Made with Metropix ©2014



To arrange a viewing for this property please call us on: **020 7261 1103**

A: 54 Southwark Bridge Road, London, SE1 0AR **T:** 020 7261 1103 **F:** 020 7401 2007 **W:**

www.nelsonssales.com

Location



Important Notice

These details have been prepared and issued in good faith and do not constitute representations of fact or form of any offer or contract. Please note that we have not carried out a structural survey of the property, nor have we tested any of the services or appliances. All measurements are intended to be approximate only. All photographs show parts of the property as they were at the time when taken.

Any reference to alterations or particular use of the property wherever stated, is not a statement that planning, building regulations or otherwise relevant consent has been obtained.

Floor plan - All measurements, walls, doors, windows, fittings and appliances, their sizes and locations are shown conventionally and approximate only and cannot be regarded as being a representation either by the seller or his Agent.



To arrange a viewing for this property please call us on: **020 7261 1103**

A: 54 Southwark Bridge Road, London, SE1 0AR **T:** 020 7261 1103 **F:** 020 7401 2007 **W:**

www.nelsonssales.com